

## 2 MusiQuE, its Mission and Structure

### 2.1 MusiQuE: mission statement and objectives

The following vision and mission statements attempt to encapsulate the essential nature of MusiQuE:

#### *Vision statement*

MusiQuE seeks to be the recognised European independent accreditation and external evaluation body for music, contributing to the continuous improvement of the quality of higher music education across Europe and beyond. Its operations are underpinned by independent, skilled and authoritative international peers. MusiQuE operates according to the Standards and guidelines for quality assurance in the European Higher Education Area (ESG) and is registered on the European Quality Assurance Register (EQAR). As such, it seeks to be a leading player in higher education quality assurance in general, working with the institutions in which its procedures are applied to construct a broadly-supported quality culture with respect to the specific contexts and individual characteristics of higher music education and its institutions. Through such work, MusiQuE aims to heighten the trust of society in the quality of music study programmes.

#### *Mission statement*

MusiQuE's work is discipline-specific and aims to be characterized by flexibility, diversity, transparency and accountability in its treatment of quality enhancement in music. Through its accreditation, quality enhancement and advisory services, MusiQuE assists higher music education institutions, across Europe and further afield, in their enhancement of quality. It treats quality assurance and enhancement from a subject-specific viewpoint and enables institutions to engage with the improvement of the discipline and its curricula from artistic, practical and other relevant perspectives. Furthermore, MusiQuE works to stimulate and support European institutions in the achievement of highly valued reputations internationally for their artistic output, education and research.

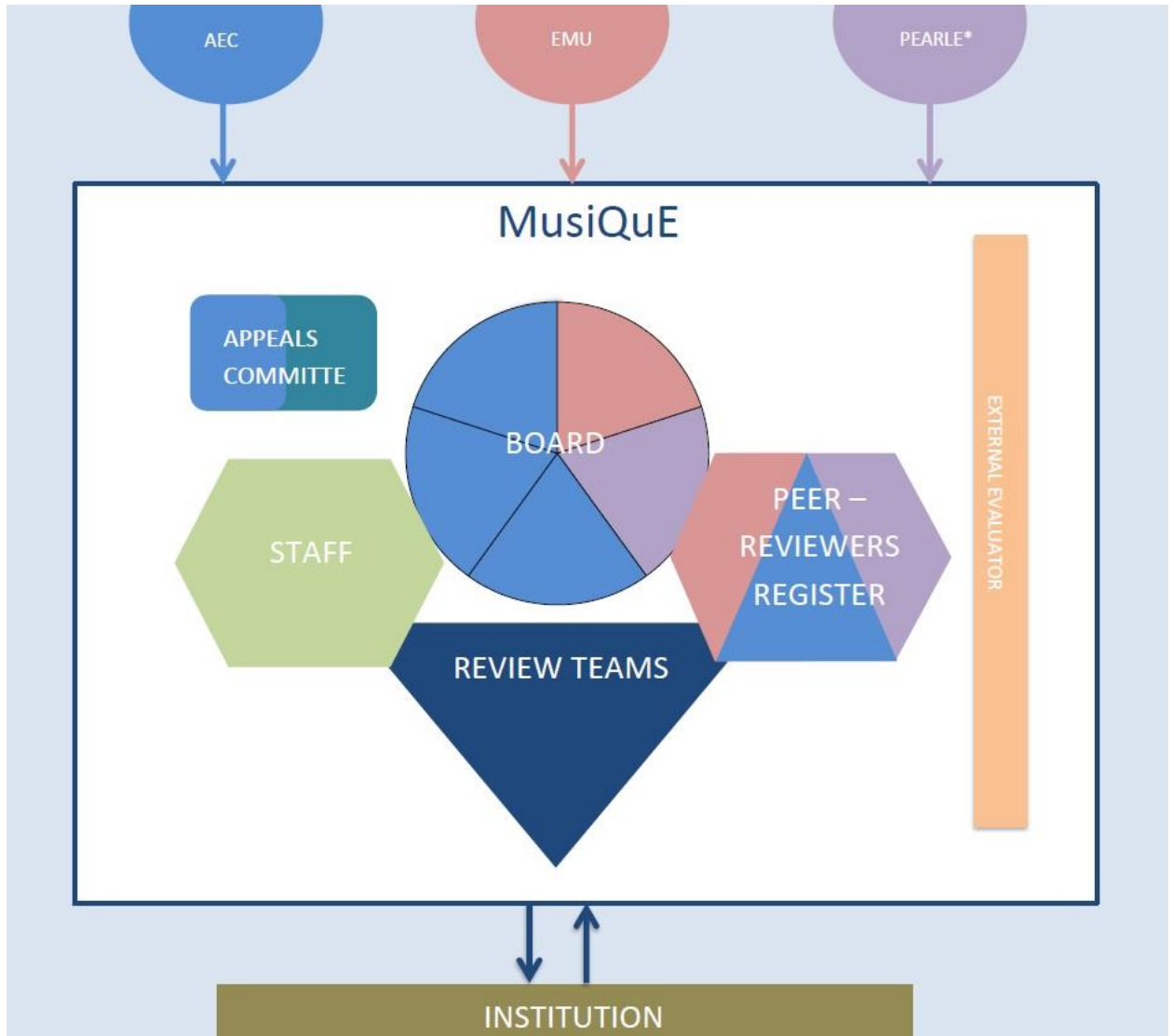
With its extensive expertise in the field of music, and knowledge of diverse national systems, MusiQuE participates in the public debate about musical quality and it contributes to the broad dissemination of information, new ideas and strategies concerning quality enhancement, learning, education and research, especially where these impinge upon the discipline of music and how it is taught, practised and researched.

### 2.2 MusiQuE: foundation and structure

MusiQuE is established as an independent foundation under Dutch law. Founded in The Hague, The Netherlands, on 7th October 2014, MusiQuE is registered at the chamber of commerce in The Hague and its current seat of operation is in Brussels, Belgium. Its structure comprises three elements:

- The MusiQuE Board
- Supporting staff, who carry out the work determined by the Board (MusiQuE staff, including seconded AEC staff and externally hired staff)
- A Peer-Reviewers Register of experts who form the teams that carry out the reviews commissioned by the Board.

The following diagram summarises MusiQuE's structure:



The MusiQuE Board and the Peer-Reviewers Register are described in Sections 3 and 4 respectively; the description of arrangements concerning MusiQuE staff is included within Section 3.